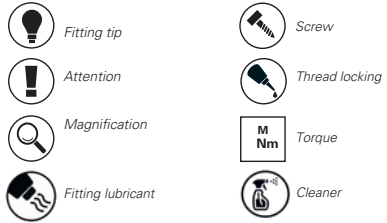


# MACHINA

## Tank protector

Keyfile



### INCLUDES

- |          |                              |              |          |
|----------|------------------------------|--------------|----------|
| <b>1</b> | Right & left crash protector |              | <b>2</b> |
| <b>2</b> | Top bracket                  |              | <b>1</b> |
| <b>3</b> | Hex socket (Allen )screw     | <b>M8x25</b> | <b>4</b> |
| <b>4</b> | Hexagon screw                | <b>M8x20</b> | <b>2</b> |
| <b>5</b> | lock nut                     | <b>M8</b>    | <b>4</b> |



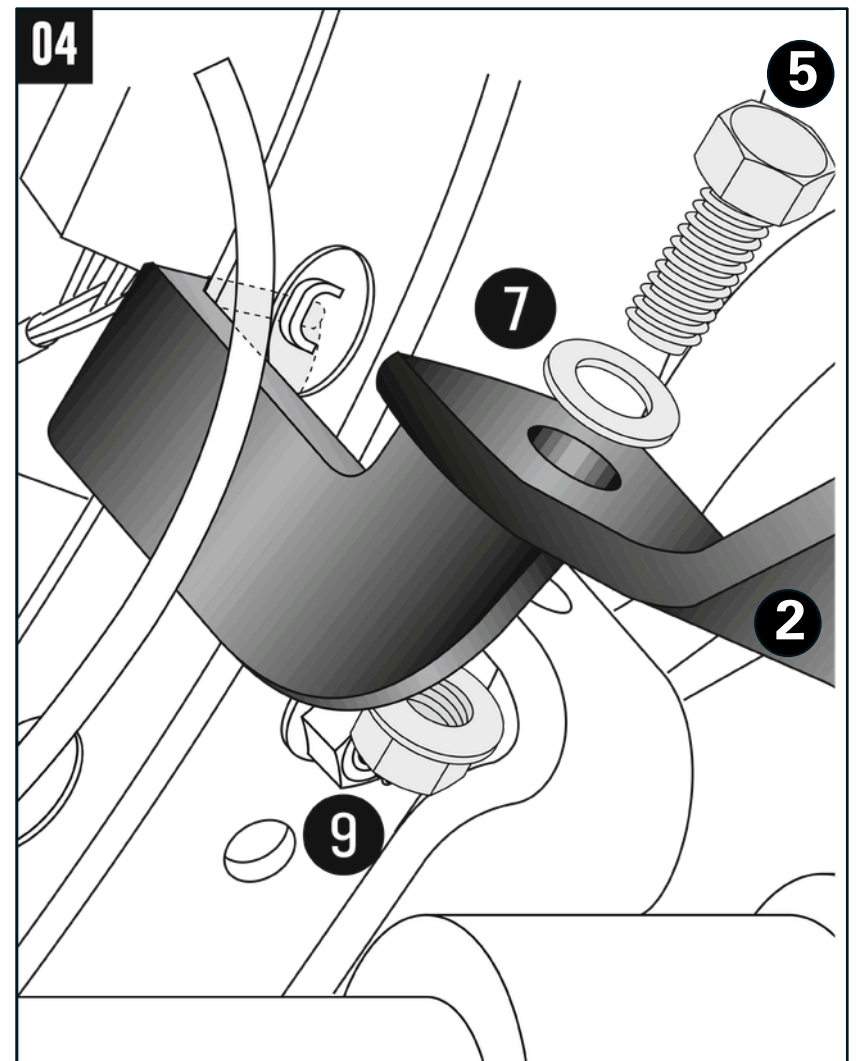
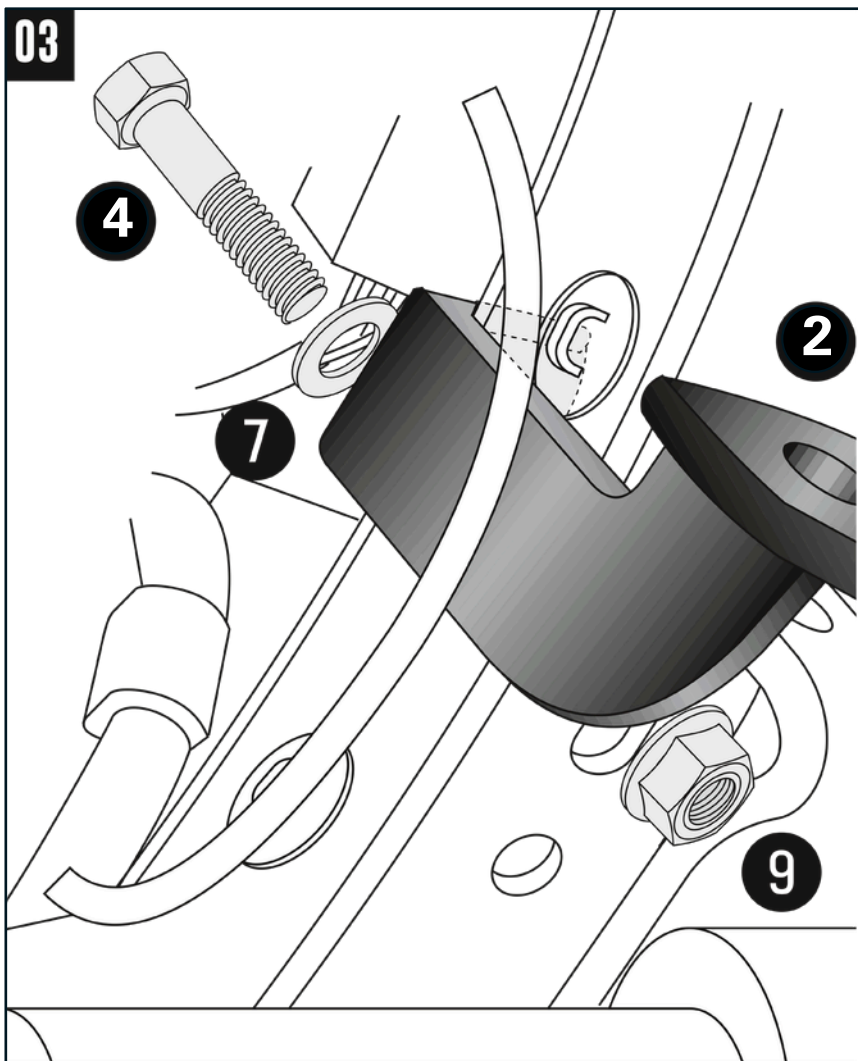
*Special tool to reach complex area.  
provided with after march 2026 vision*



***Loosen the fork bulkhead. Once the bulkhead is reattached.***

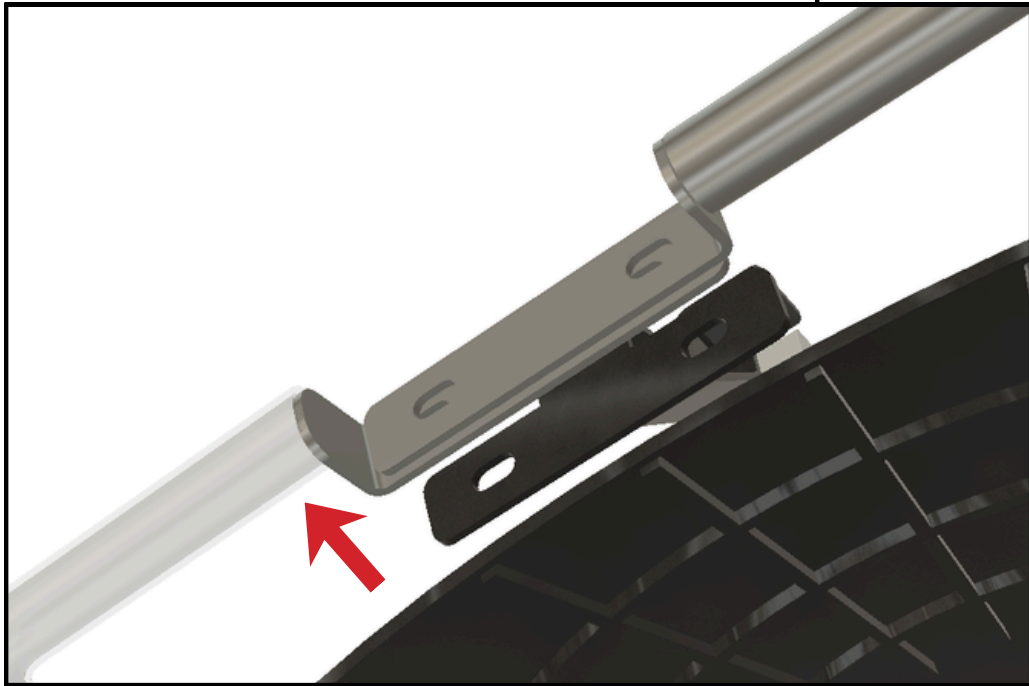
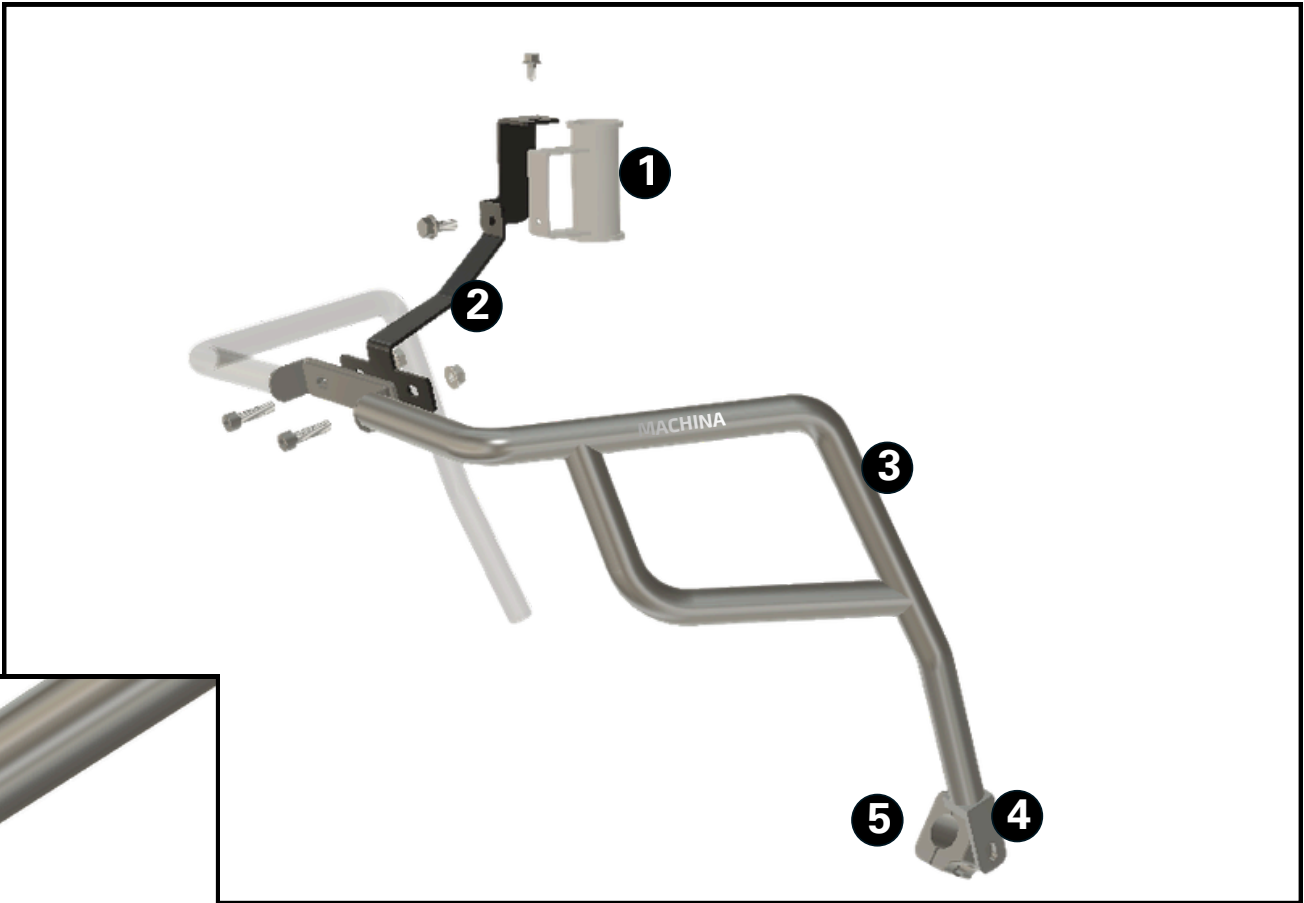


***Place this bracket that connects fram to crash bars and also connects both the bars together to transfer the Load from one side to another.***



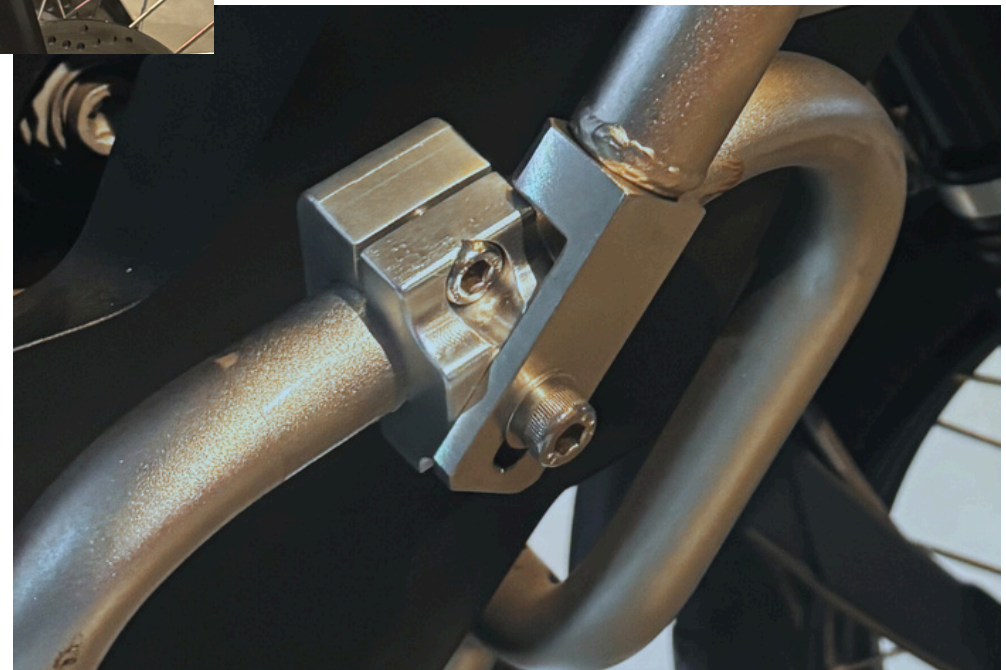
Mounting the mounting adapter at the top: Dismantle the cable tie from the cockpit and lead the cable along the top adapter. After mounting, reattach the cable with the cable tie. The top adapter is screwed to the upper cockpit holder. Screw connection (Pic.3): Insert the hexagon screw M8x65 with washer Ø8.4 and top adapter from above and use the tensilock nut M8 from below. Use the enclosed special tool to hold the tensilock nut. Screw connection (Pic.4): Fasten the top adapter from the front with the M8x20 hexagon screw with washer Ø8.4, inside with the tensilock nut M8. Use special tool (provided in march 2026 version) to hold the tensilock nut. Align and tighten the holding adapter centrally.

**Note - Some screw sizes maybe different for virsion before march 2026**



**KEEP THE PIPES AWAY FROM FORK BULKHEAD SO THAT THE CRASH BARS DOESN'T TOUCH THE FORK BULKHEAD.**

**ADJUST THE CRASH BARS MOUNT ON LOWER CRASH BARS MAKE SURE THE CRASH BARS DOESN'T TOUCH THE FAIRING NEAR THE CRASH BARS FRONT BRACKET AREA.**



**MACHINA**

[www.motomachina.com](http://www.motomachina.com)